



Composites

CLEAN + DURABLE  
surface systems

HYGIENIC WALL + CEILING SYSTEMS for cultivation facilities



featuring GLASBORD®

frp Fiberglass Reinforced Panels



## why **frp**? where **frp**?

### protect your facility

Have a clean environment with Crane Composites resilient wall coverings. Our Glasbord with Surfaseal offers unsurpassed hygiene and durability for cultivation applications, including cannabis grow facilities.

Creating a protective envelope for critical areas demands high-performance finishes when handling, processing, packaging, storing, or testing cannabis material. That's where Glasbord from Crane Composites comes in. Made of fiberglass reinforced plastic (FRP), Glasbord with Surfaseal is extremely moisture-resistant and non-porous. The Surfaseal film finish, found only on Glasbord, provides a barrier that's highly resistant to impact and scratching. Because of its unique process, the Surfaseal finish will not trap soil or bacteria on the panel. The robust panels hold up under high humidity and water exposure areas for vapor barrier protection.

Crane Composites Hygienic Wall Systems have often been used in pharmaceutical applications, which require sanitary critical wall covering. Glasbord with Surfaseal provides tested and proven performance at an affordable price point with a 10-year limited warranty.



### GLASBORD **specifications**

wall + ceiling panels

#### AVAILABLE SIZES:

2' x 2' | 2' x 4' | 4' x 8' | 4' x 10'  
(other sizes available upon request)

#### THICKNESSES:

0.09" (embossed) | 0.075" (smooth)

#### FIRE RATINGS:\*\*

Class A or Class C per ASTM E-84  
CAN/ULC-S102  
FM Approved Available

#### ADDITIONAL PRODUCT OFFERINGS:

Ceiling and laminated panels also see our ceiling application flyer (form #7714) for additional information.

### benefits

#### MOLD + MILDEW FREE

Glasbord FRP panels are resistant to humidity

#### VAPOR BARRIER

Our monolithic wall system prevents the transfer of spores and insects through the walls

#### EASY TO INSTALL

Install panels with minimal downtime over existing materials

#### EASY TO MAINTAIN

FRP wipes away clean with ease and do not need painting

#### IMPACT RESISTANT

Durable panels are resistant to scratches and dents against rolling carts

#### AVAILABLE IN A CLASS A OR CLASS C FIRE RATING

Meets requirements of major model building codes per ASTM E-84

#### EASY TO CLEAN

FRP will not promote microbial growth which supports use in wet and damp growing environments

complete your **CRANE** hygienic wall + ceiling panel system

## Seam Sealant

### two-part polyurethane seam sealant

Seam Sealant is an equal-mix, two-component bright white urethane sealant system used to bond and seal a variety of plastics. Use for a seamless Glasbord installation that is easy to clean.



## Sani-Base™

### seamless wall to floor transitions

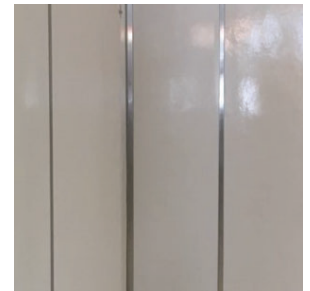
Use Sani-Base stainless accessories for innovative moisture mitigation solutions for seamless wall to floor transitions. Our Sani-Base accessories are available in five different profiles to fit your application needs.



## Stainless Trims

### steel trims for corners and window frames

Stainless steel trim pieces are the answer to having a sanitary, durable and clean transition while providing increased impact resistance and longevity to develop a more aesthetically pleasing finish.



## Crane Adhesive

### two frp adhesive options

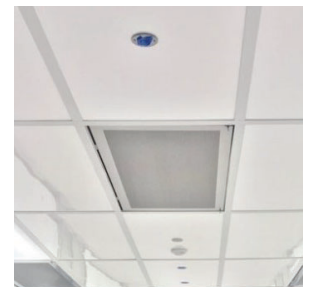
Crane's Fast Grab and Advanced Polymer adhesive offers professional-strength and is specifically formulated for the installation of FRP panels over most porous surfaces. It offers quick grab and strength development that requires minimal bracing.



## Sanigrid Ceiling Grid System

### fire-rated fiberglass ceiling system

Sanigrid is known for its moisture and corrosion resistance in high humidity installations. It won't rust, pit, dent, or peel like metal grid systems.





## Glasbord panels with Surfaseal finish

Cultivation Facility and Cleanroom Suitable Material testing quantifies the value that Surfaseal adds to the FRP product. Surfaseal creates surfaces that deliver unsurpassed hygiene and durability. The Surfaseal film finish, found only on Glasbord, provides a barrier that's highly resistant to impact and scratching. Because of it's unique process, the Surfaseal finish will not trap soil or bacteria on the panel. Glasbord with Surfaseal panels protect your walls and keep them looking clean.

Glasbord panels are the first FRP panels that are HACCP certified. Hazard Analysis Critical Control Point (HACCP) certifies that Glasbord panels are suitable for use in food and beverage facilities that operate in accordance with a HACCP based Food Safety Program. Orientation of embossed panels must be installed/ run vertically for any areas that require a sanitary finish under HACCP certification.

The Hygienic System is completed with the use of biological and chemically tested adhesive and seam sealant. Replacing traditional FRP moldings, the seam sealant creates a monolithic surface, eliminating potential for penetrating moisture, bacteria, mold, viruses and other agents causing healthcare associated infections. The end result is a total wall covering system you can trust to protect your clean environments.

## who we are

Crane Composites Inc., a subsidiary of Crane Co. (NYSE:CR), is the world's leading provider of fiber-reinforced composite materials.

Since 1954, we have continued to pioneer numerous patented technologies for industrial and commercial product applications. Crane Composites fiber-reinforced panels (FRP) can be found in virtually every type of vertical market, from highly industrialized environments to stylish retail and hospitality settings.

No matter what the application, our products and team reflect our mission statement: we are a performance

<b>Test</b>	CHEMICAL CLEANABILITY	MOLD AND MILDEW FREE
<b>Standard</b>	ISO 2812-1	ATSM D3273 & ASTM D3274
<b>Testing Laboratory</b>	Independent 3rd Party Testing	Biological Lab Services
<b>Results for FSFM Product</b>	20% NAOH ONLY ISSUE	ATSM D3273 & ASTM D3274

driven organization committed to global leadership and products of high-quality composite materials.

Customers benefit not only from the outstanding performance characteristics of our products, bus also from our extensive support programs. Our expert product teams are focused on the needs of customers to provide unparalleled service and expertise.



[cranecomposites.com](http://cranecomposites.com) | 1.800.435.0080 | [sales@cranecomposites.com](mailto:sales@cranecomposites.com)

