

CRANE
Composites

STYLED + DURABLE
surface systems



frp Fiberglass Reinforced Panels

PATHWAYS
COLLECTION

PATHWAYS

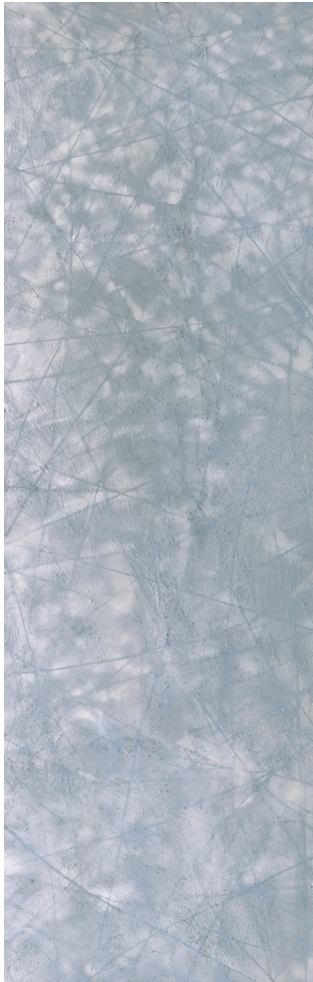
COLLECTION

Inspired by both the natural and digital worlds. The Pathways Collection echoes the variegated colors and shapes seen during a stroll through nature. But it's also inspired by digital connection points - another type of pathway humans use every day, one that's often unseen or indistinct.



there is more to **frp** than ever before

12 Patterns **custom patterned wall panels from** DESIGNS FRP



Signals | 01PW
representative of full panel design



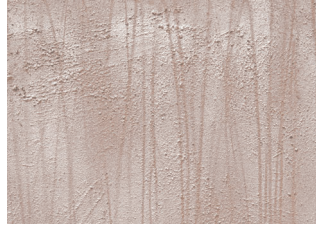
Reflect | 02PW



Line | 03PW



Cell | 04PW



Stream | 05PW



Beam | 06PW



Social | 07PW



Link | 08PW



Currents | 09PW



Wave | 10PW



Connect | 11PW



Footprint | 12PW

product specs

AVAILABLE SIZES:

4' x 8' | 4' x 10'

THICKNESSES:

0.075"

FIRE RATINGS:**

Class A or Class C per ASTM E-84 | CAN/ULC-S102

ACCESSORIES:

Silhouette Trims Moldings | Aluminum Moldings
Color Rite™ Color-Matched Silicone Caulk

PATHWAYS COLLECTION

Look at our other collections for more patterned options.



THE CLASSICS COLLECTION



THE FOREST COLLECTION



THE HEARTLAND COLLECTION



THE RUNWAY COLLECTION



THE CITY WORKS COLLECTION



THE CUSTOM PROGRAM

more than 65 years

A global leading provider of resilient wall and ceiling coverings. Kemlite® was established in 1954 and the company changed names to Crane Composites in 2007. Crane Composites is headquartered in Channahon, IL and all our products are manufactured in the United States. We work with hundreds of distributors, ensuring our products are easily accessible and readily available to our customers.



greenguard certified

All Crane Composites wall and ceiling coverings have earned GREENGUARD Certification for low chemical emissions, issued by UL Environment. This certification reflects our dedication to improving the quality of our products, while using low-emitting materials in their construction.

Thanks to their environmental benefits, the use of Crane Composites products may also contribute to earning LEED® certification.