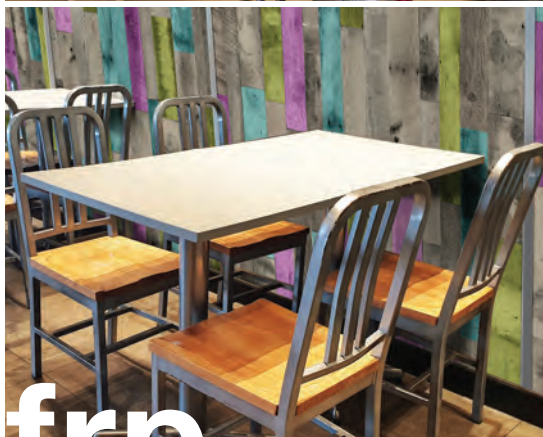


WALL & CEILING PANELS



frp

FIBERGLASS REINFORCED PANELS

FOR CANADA 



WHY FRP? WHERE FRP?



STYLE + HYGIENE

When you need grace under pressure, fiberglass reinforced plastic (FRP) panels are the perfect choice for your walls. From moisture and germs to daily dirt and grime, our FRP panels are able to stand up to even the toughest environments - without sacrificing style and beauty.

As the first and largest global manufacturer of FRP wall paneling, Crane Composites offers the industry's most innovative and resilient FRP panels, backed by our expert technical and installation support staff. Our FRP panels are suitable for most any commercial space and provide key benefits including:

HIGH END STYLE:

Take your surfaces beyond with our wide range of surface types, textures and colors, offering you endless options to create the beautiful look you've envisioned for your walls.

DEPENDABLE PERFORMANCE:

Count on Crane FRP panels for extremely strong, durable walls that provide resistance to mold, mildew, bacteria growth, stains and chemicals.

SIMPLE & COST-EFFECTIVE:

Take it easy, from start to finish. Our FRP panels are simple to install over any existing wall surface and even simpler to maintain with a mild cleanser and sponge or soft brush. Plus, they're easy on your budget and designed to last for years to come.



THERE IS MORE TO FRP than ever BEFORE

restaurants

KITCHENS | DINING ROOMS | RESTROOMS | SELF-SERVICE BEVERAGE STATIONS | BAR AREAS | STORE ROOMS

education

CAFETERIAS | CLASSROOMS | RESTROOMS | HALLWAYS | LOCKER ROOMS | STADIUMS

healthcare

CLEANROOMS | WAITING ROOMS | DOCTOR OFFICES | HOSPITAL ROOMS | DIALYSIS CLINICS

hospitality

CAFES | KITCHENS | LOBBIES | RESTROOMS | FOOD SERVICE AREAS | SERVICE HALLWAYS

cleanroom

PHARMACEUTICAL | LABS | FOOD PROCESSING | HOSPITALS | WAREHOUSING

retail

PUBLIC AREAS | CUSTOMER SERVICE | RESTROOMS | BAKERIES | DELIS | STORE ROOMS

All Crane Composites coverings have earned GREENGUARD Certification for low chemical emissions, issued by UL Environment. This certification reflects our dedication to improving the quality of our products, while using low-emitting materials in their construction. The use of Crane Composites products may also contribute to earning LEED® certification.





add surfaseal

The Surfaseal film finish, found only on Glasbord, provides a barrier that's highly resistant to impact and scratching. Because of our unique process, the Surfaseal finish will not trap soil or bacteria on the panel. The surface is up to 10 times easier to clean and up to six times more stain resistant than other sanitary wall systems.

GLASBORD EMBOSSED WALL PANEL
CLASSIC COLLECTION | STONE (15)

GLASBORD® Wall Panels with Surfaseal Finish

A global leading provider of resilient wall and ceiling coverings. Kemlite® was established in 1954 and the company changed names to Crane Composites in 2007 to reflect the company's ongoing new product innovations that continue to expand beyond hygienic wall panels.



GLASBORD EMBOSSED | SOFT BEIGE (70)



GLASBORD SMOOTH | WHITE (85)



GLASBORD EMBOSSED | IVORY (84)

PRODUCT SPECS

AVAILABLE SIZES:

4' x 8' | 4' x 10' (other sizes available upon request)

THICKNESSES:

0.09" (Embossed) | 0.075" (smooth)

FIRE RATINGS: **

Class A or Class C per ASTM E-84

CAN/ULC-S102 | FM Approved Available

** see technical data sheets for fire rating information by color option

ACCESSORIES:

Standard Polypropylene Moldings

Polyurethane Seam Sealant

Color Rite™ Color-Matched Silicone Caulk

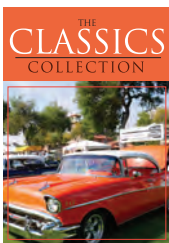
APPLICATIONS

- Commercial Kitchens
- Cleanrooms
- Restrooms
- Convenience Stores
- Locker Rooms
- Food Processing Plants

FEATURES

- Mold & Mildew Free
- Meets USDA/FSIS Requirements
- Easy to Install
- Cleanable
- Durable

COLOR COLLECTION OPTIONS





warm designs

Add depth and dimension to walls, with our unique textures including sandstone, linen, tile and beaded finishes. Beyond the beauty, Varietex offers all the same benefits of traditional FRP wall coverings

VARIETEX SANDSTONE WALL PANEL
CLASSIC COLLECTION | ALMOND BREEZE (866)

VARIETEX® Innovative Textured and Colored Wall Panels

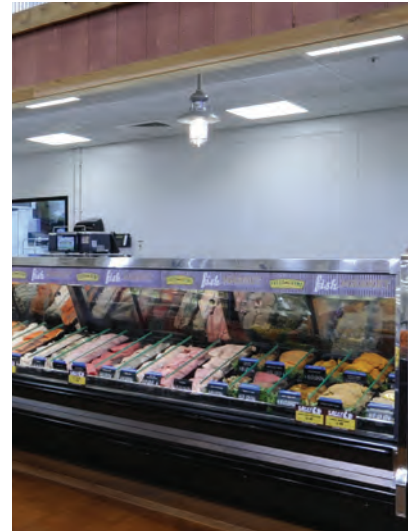
Take your surfaces beyond with a tile like finish on the sandstone and gel-coat panels. The grout lines are sealed for easy maintenance, avoiding the grimy build up encountered with regular tile.



SATIN SANDSTONE | KEYS COLLECTION
ELLIOTT (1299)



SATIN LINEN | CLASSIC COLLECTION
COTTON WHITE (1130)



SANDSTONE | CLASSIC COLLECTION
COTTON WHITE (1130)

PRODUCT SPECS

AVAILABLE SIZES:

4' x 8' | 4' x 10'

THICKNESSES:

0.09" (sandstone and linen) | 0.075" (beaded)

FIRE RATINGS: **

Class A per ASTM E-84 (sandstone and linen non-satin only)

Class C per ASTM E-84 | CAN/ULC-S102

** see technical data sheets for fire rating information by color option

ACCESSORIES:

Color Rite™ Color-Matched Silicone Caulk

Silhouette Trims® Moldings* | Aluminum Moldings

Beaded Panel Moldings

*Silhouette Trims are available for Classic Collection only

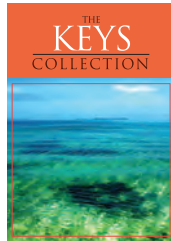
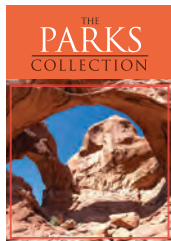
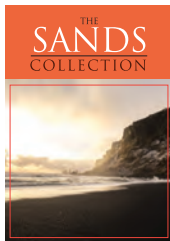
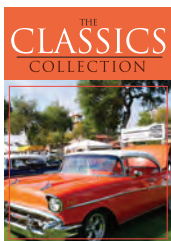
APPLICATIONS

- School Hallways
- Cafeterias
- Dining Rooms
- Reception Areas
- Health Clubs
- Hospitals

FEATURES

- Mold & Mildew Free
- Meets USDA/FSIS Requirements
- Easy to Install
- Cleanable
- Durable

COLOR COLLECTION OPTIONS



SEE PAGE 19
FOR OUR

KEYS COLLECTION



custom designs

Imagine your artwork on a wall. Crane Composites brings your concept to reality with vibrant breathtaking details. Ask for alterations to one of our existing patterns or create your own unique design. Give life to your custom look in any arrangement you choose including logos, artwork, or corporate identity with vibrant high-resolution imagery.

DESIGNS WALL PANEL
CLASSIC COLLECTION | CAMEL CANVAS (010C)

DESIGNS Collection | Custom Pattern Wall Panels

DESIGNS resilient wall coverings, bring both style and durability into any commercial space. No need to sacrifice aesthetics for hygiene.



CLASSIC COLLECTION
CACTUSCANVAS (009C)



CLASSIC COLLECTION
COASTAL CANVAS (007C)



CLASSIC COLLECTION
CAMEL CANVAS (010C)

PRODUCT SPECS

AVAILABLE SIZES:

4' x 8' | 4' x 10'

THICKNESSES:

0.075"

FIRE RATINGS:

Class A or Class C per ASTM E-84
CAN/ULC-S102

ACCESSORIES:

Silhouette Trims® Moldings | Aluminum Moldings
Color Rite™ Color-Matched Silicone Caulk

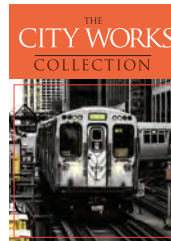
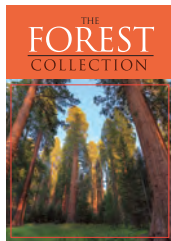
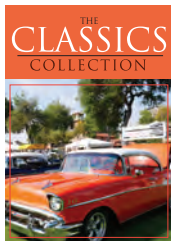
APPLICATIONS

- School Hallways
- Cafeterias
- Dining Rooms
- Reception Areas
- Health Clubs
- Hospitals

FEATURES

- Mold & Mildew Free
- Meets USDA/FSIS Requirements
- Easy to Install
- Cleanable
- Durable

COLOR COLLECTION OPTIONS



SEE PAGE 20
FOR OUR NEW



add strength

Kemply is fabricated by laminating Glasbord panel to a rigid substrate. The resulting panel has structural strength and rigidity, allowing installation directly to a stud wall or ceiling. Sanigrid is the ideal solution for high humidity and chemical environment installations. Sanigrid system features a fast installation, with the entire system easily snapping together.

KEMPLY WALL PANELS WITH SANIGRID CEILING GRID
FLUTED POLYPROPYLENE | EMBOSSED WHITE (85)

KEMPLY® Laminated Wall and Ceiling Panels

PRODUCT SPECS

AVAILABLE SIZES:

4' x 8' | 4' x 10' (wall panels)
23.75" x 23.75" | 23.75" x 47.75" (ceiling panels)

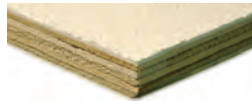
AVAILABLE GLASBORD SKINS:

Glasbord Embossed or Smooth Textures in Class A or Class C
Fire Rating per ASTM E-84 (PWI, PIF, PSIF, FX, FSI)

AVAILABLE SUBSTRATES:



Gypsum
1/2" | 5/8"



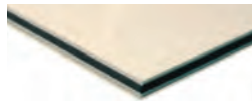
Plywood
3/8" | 1/2" | 5/8" | 3/4"



Oriented Strand Board
3/8" | 1/2" | 5/8"



Fluted Polypropylene
0.32" | 0.40"



Double-Sided ACP Core
0.12" | 0.24"

APPLICATIONS

- Car Washes
- Food Processing Plants
- Refrigerated Warehouses
- Commercial Kitchens
- Laboratories
- Locker Rooms
- Dormitories
- Kennels

FEATURES

- Mold & Mildew Free
- Meets USDA/FSIS Requirements
- Easy to Install
- Cleanable
- Durable

SANIGRID® II Ceiling Grid System

PRODUCT SPECS

AVAILABLE CEILING CONFIGURATIONS:

2' x 2' | 2' x 4'

FIRE RATING:

Class A Fire Rating per ASTM E-84

AVAILABLE CEILING PANELS:

Glasbord Embossed or Smooth Textures in Class A or Class C
Fire Rating per ASTM E-84 (CGI, PSIF, FX) or Kemplly ACP Core



APPLICATIONS

- Car Washes
- Food Processing Plants
- Chemical Processing Plants
- Refrigerated Warehouses
- Commercial Kitchens

FEATURES

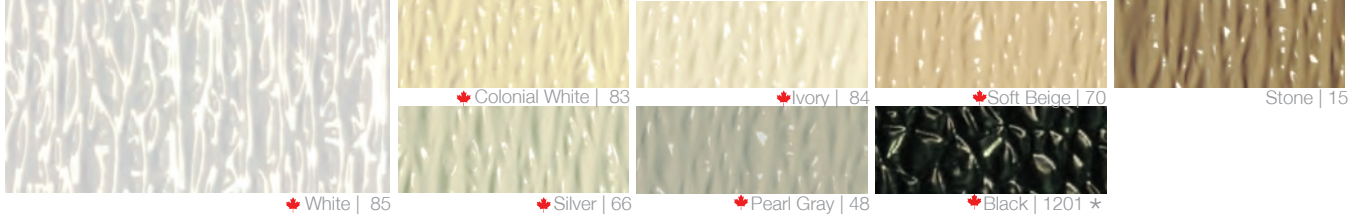
- Moisture Resistant
- Ideal for High Humidity
- Resistant to Chemical Environments
- Will Not Rust, Pit, Dent or Peel



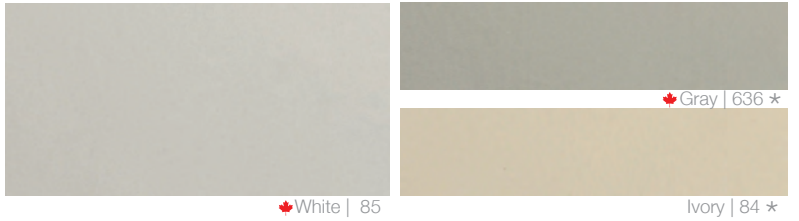
CLASSIC COLLECTION

GLASBORD

PEBBLED EMBOSSED TEXTURE

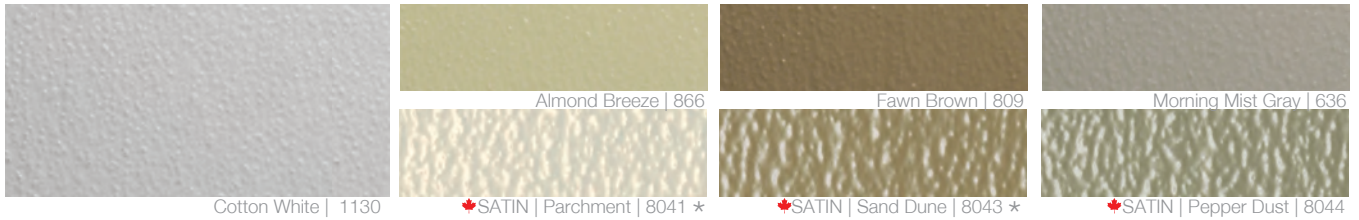


SMOOTH TEXTURE

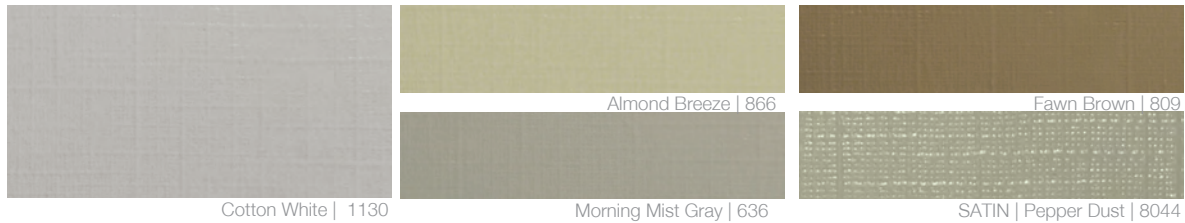


VARIETEX

SANDSTONE TEXTURE



LINEN TEXTURE



TILE-LOOK FINISH



BEADED TEXTURE

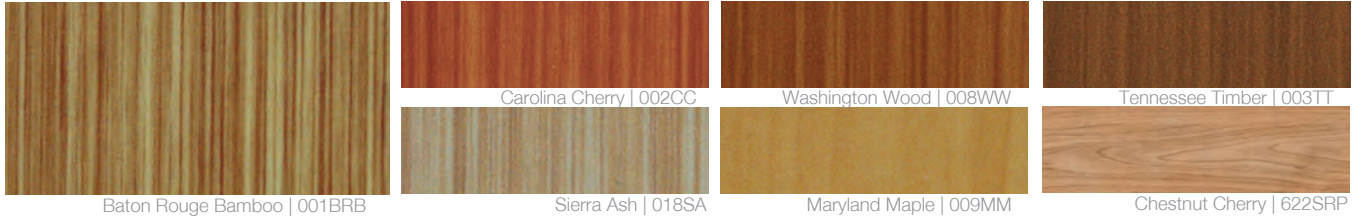


* AVAILABLE IN CLASS C PER ASTM E-84 ONLY

🍁 AVAILABLE IN CAN/ULC-S102 FIRE RATING

DESIGNS

WOODGRAIN PATTERNS



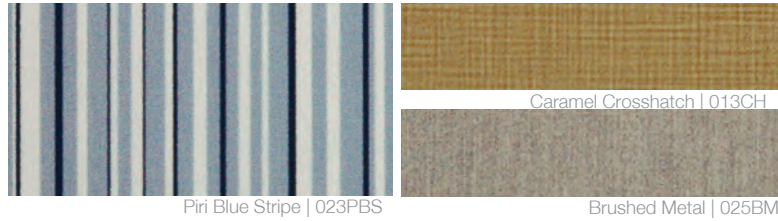
CANVAS PATTERNS



STONE AND NATURAL PATTERNS



INNOVATIVE PATTERNS



MINIMUM ORDER QUANTITIES AND OTHER TERMS MAY APPLY.

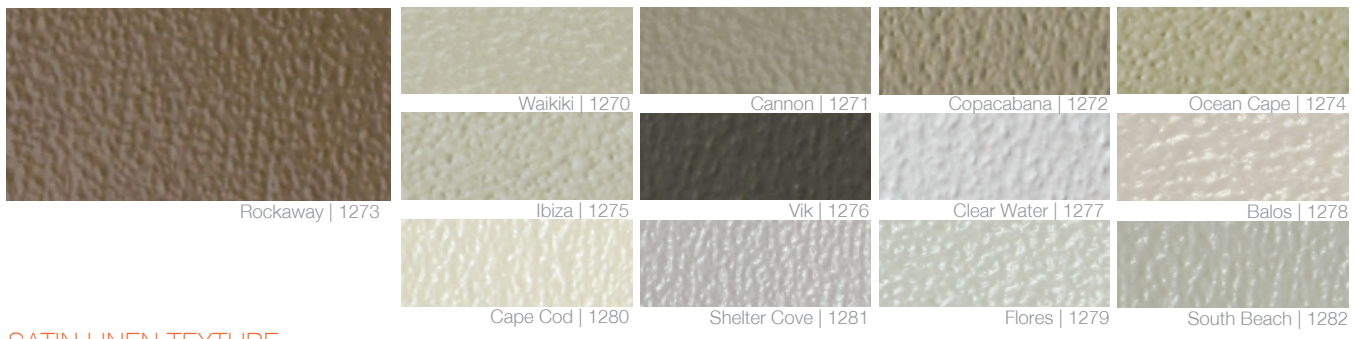
DUE TO LIMITATIONS OF THE PRINTING PROCESS, PATTERNS AND COLORS MAY VARY. THEY ARE A REPRESENTATION OF THE PRODUCT. PLEASE OBTAIN A SAMPLE BEFORE MAKING A FINAL SELECTION AT FRPSAMPLES.COM



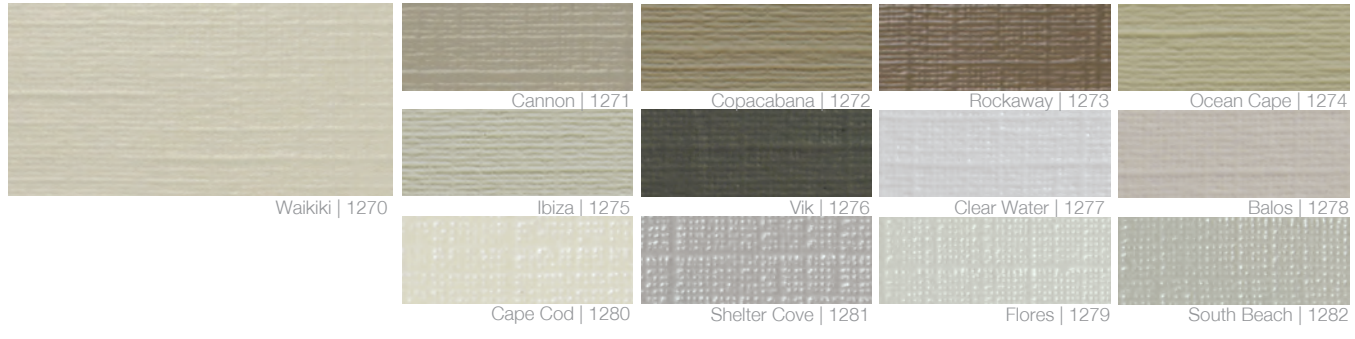
SANDS COLLECTION

VARIETEX

SATIN SANDSTONE TEXTURE



SATIN LINEN TEXTURE



🇨🇦 SANDS COLLECTION IS AVAILABLE IN CAN/ULC-S102 FIRE RATING



FOREST COLLECTION



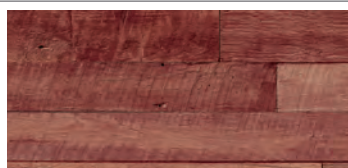
DESIGNS



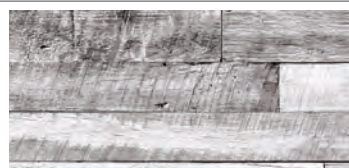
Sabine | 30W



Pike | 31W



Sequoia | 32W



Arapaho | 33W



Payette | 34W



Ocala | 35W



Sawtooth | 36W

FOREST COLLECTION IS AVAILABLE IN CAN/ULC-S102 FIRE RATING 

MINIMUM ORDER QUANTITIES AND OTHER TERMS MAY APPLY. IMAGES ARE BASED ON A 2'X2' EXAMPLE - FULL PANELS MAY HAVE SLIGHT DIFFERENCES IN PATTERN AND HUE IN ORDER TO PORTRAY A REALISTIC MATERIAL VIEW.

DUE TO LIMITATIONS OF THE PRINTING PROCESS, PATTERNS AND COLORS MAY VARY. THEY ARE A REPRESENTATION OF THE PRODUCT. PLEASE OBTAIN A SAMPLE BEFORE MAKING A FINAL SELECTION AT FRPSAMPLES.COM

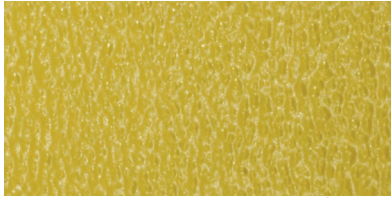




PARKS COLLECTION

VARIETEX

SATIN SANDSTONE TEXTURE



North Rim | 1290



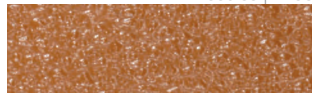
Needles | 1293



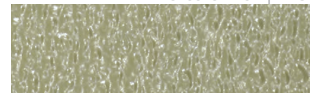
Delicate Arch | 1285



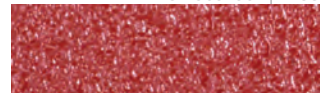
The Racetrack | 1298



Cades Cove | 1289



Tower Falls | 1291



Mauna Loa | 1295

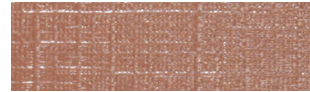
SATIN LINEN TEXTURE



North Rim | 1290



Needles | 1293



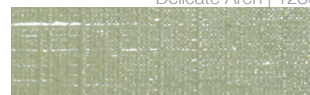
Delicate Arch | 1285



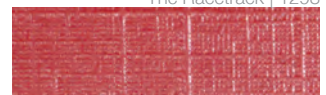
The Racetrack | 1298



Cades Cove | 1289



Tower Falls | 1291



Mauna Loa | 1295

🇨🇦 PARKS COLLECTION IS AVAILABLE IN CAN/ULC-S102 FIRE RATING



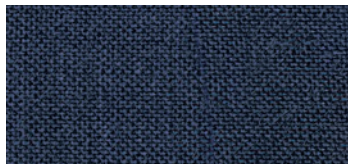
HEARTLAND COLLECTION



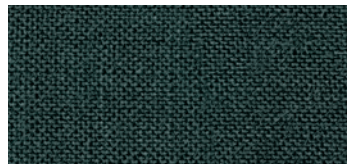
DESIGNS



Colby | 57HC



Waukon | 55HC



Guss | 53HC



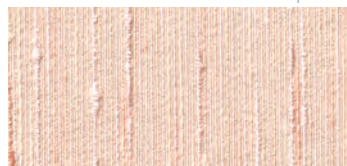
Shelby | 50HC



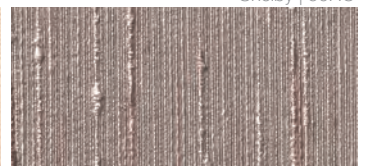
Dwight | 51HC



Essex | 54HC



Davey | 52HC



Conrad | 56HC

HEARTLAND COLLECTION IS AVAILABLE IN CAN/ULC-S102 FIRE RATING 

MINIMUM ORDER QUANTITIES AND OTHER TERMS MAY APPLY.

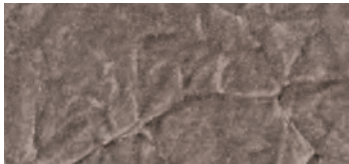
DUE TO LIMITATIONS OF THE PRINTING PROCESS, PATTERNS AND COLORS MAY VARY. THEY ARE A REPRESENTATION OF THE PRODUCT. PLEASE OBTAIN A SAMPLE BEFORE MAKING A FINAL SELECTION AT FRPSAMPLES.COM





RUNWAY COLLECTION

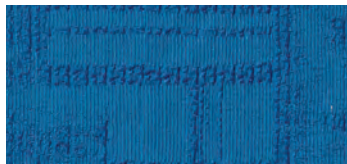
DESIGNS



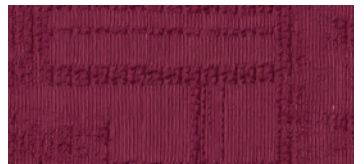
Ginza | 70RC



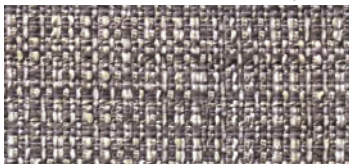
Oxford | 74RC



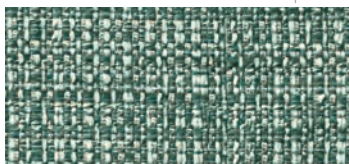
d'Oro | 71RC



Avenues | 72RC



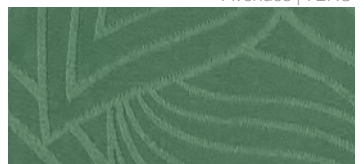
Gracia | 76RC



Garment | 73RC



Palermo | 75RC



Champs | 77RC

🇨🇦 RUNWAY COLLECTION IS AVAILABLE IN CAN/ULC-S102 FIRE RATING

MINIMUM ORDER QUANTITIES AND OTHER TERMS MAY APPLY.

DUE TO LIMITATIONS OF THE PRINTING PROCESS, PATTERNS AND COLORS MAY VARY. THEY ARE A REPRESENTATION OF THE PRODUCT. PLEASE OBTAIN A SAMPLE BEFORE MAKING A FINAL SELECTION AT FRPSAMPLES.COM



KEYS COLLECTION

VARIETEX

SATIN SANDSTONE TEXTURE



SATIN LINEN TEXTURE



KEYS COLLECTION IS AVAILABLE IN CAN/ULC-S102 FIRE RATING 



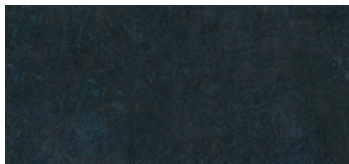


CITY WORKS COLLECTION

DESIGNS



Burlington | 90CW



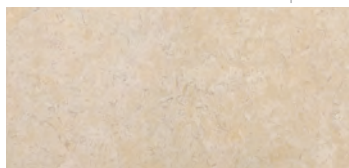
LaSalle | 91CW



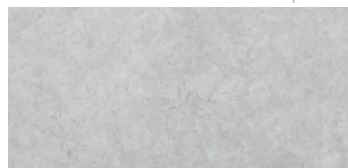
Staten | 92CW



Skyway | 93CW



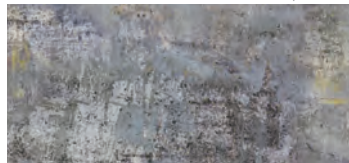
Union | 94CW



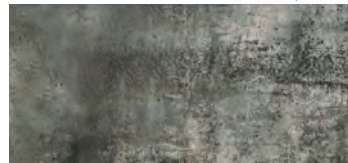
Colfax | 95CW



Westpark | 96CW



Sumner | 97CW



Franklin | 98CW



Mover | 99CW

🇨🇦 CITY WORKS COLLECTION IS AVAILABLE IN CAN/ULC-S102 FIRE RATING

MINIMUM ORDER QUANTITIES AND OTHER TERMS MAY APPLY.
IMAGES ARE BASED ON A 2'X2' EXAMPLE - FULL PANELS MAY HAVE SLIGHT DIFFERENCES IN PATTERN AND HUE
IN ORDER TO PORTRAY A REALISTIC MATERIAL VIEW.

DUE TO LIMITATIONS OF THE PRINTING PROCESS, PATTERNS AND COLORS MAY VARY. THEY ARE A REPRESENTATION
OF THE PRODUCT. PLEASE OBTAIN A SAMPLE BEFORE MAKING A FINAL SELECTION AT FRPSAMPLES.COM



THERE IS NO BETTER OPTION.

Crane Composites' customer support teams are inspired by one common objective: to help our customers succeed. Our trained staff of experts are focused on delivering timely, practical and innovative solutions that help our clients grow their business. From product information and service, to testing and technical service, all our products are backed with the resources you need, when you need them.





FINISHING TOUCHES

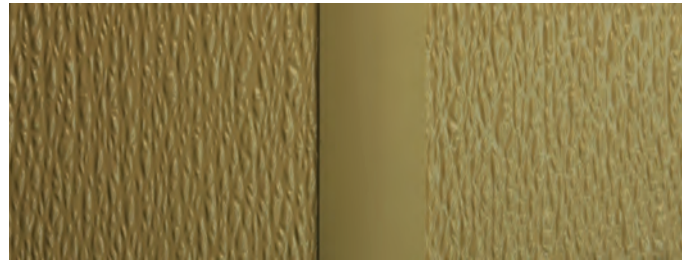
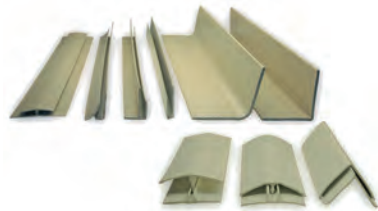
SEAM TREATMENT ACCESSORIES

Crane Composites offers an array of seam treatment options to complete your wall panel installations.

POLYPROPYLENE/PVC MOLDINGS

STANDARD FOR GLASBORD | WIDE FOR KEMPLY

Standard moldings are contractor grade moldings that are perfect for use with FRP panels. Crane Composites division bars feature patterned expansion control guides to assist with proper FRP installation. Available in 10' lengths in Glasbord and Kemply standard colors.



COLOR SIL COLOR-MATCHED CAULK

FOR DESIGNS, VARIETEX, & GLASBORD PANELS | BY COLOR RITE INC.

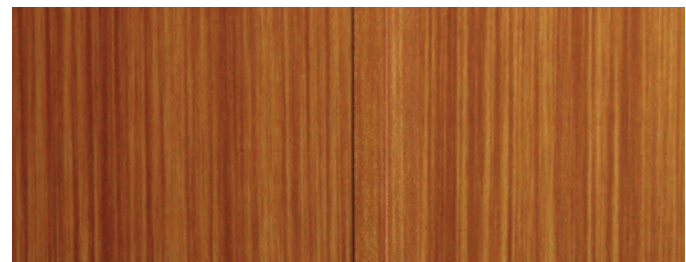
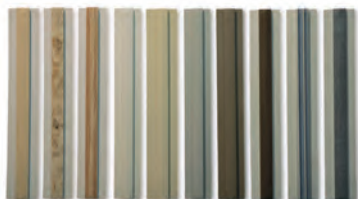
Use Color Rite's Color Sil caulk for professional looking panel installations without the use of moldings. Crane has teamed up with Color Rite to provide materials that compliment Crane wall panels in over 40 colors. Use with Color Rite's Pre-Tooling Mist to install with ease.



SILHOUETTE TRIMS

FOR DESIGNS & VARIETEX PANELS

Silhouette Trims offer a narrow profile to minimize the seam. Crane Composites Silhouette Trims feature patterned expansion control guides to assist with proper FRP installation. Available in 10' lengths in DESIGNS and VARIETEX Classic collection.



BEADED PANEL MOLDING

FOR VARIETEX BEADED PANELS

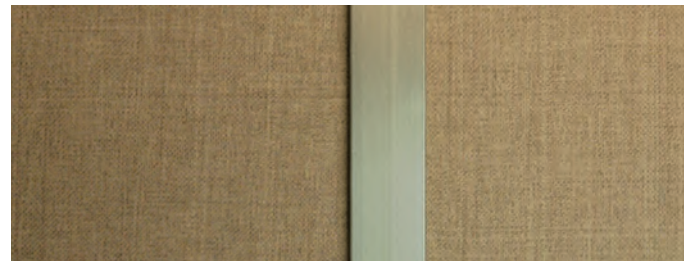
Specially designed beaded division bar to compliment our beaded panels. Available in 10' lengths in cotton white (1130) color.



ALUMINUM TRIMS

FOR DESIGNS & VARIETEX PANELS

Designed for a contrasting and upscale look. Available in 10' lengths in silver color.



POLYURETHANE SEAM SEALANT

FOR SEAMLESS GLASBORD PANELS

Seam Sealant sealant is an equal-mix, two-component bright white urethane sealant system used to bond and seal a variety of plastics.



INSTALLATION TOOLS

OUR WALL PANELS ARE EASY TO INSTALL WITH OUR TOOLS

Installation accessories include our Crane Fast Grab or Crane Advanced Polymer Adhesive, rollers and trowels along with detailed installation guides and videos. Visit cranecomposites.com/resources.html for detailed installation information.



WHO WE ARE

Crane Composites Inc., a subsidiary of Crane Co. (NYSE:CR), is the world's leading provider of fiber-reinforced composite materials.

Since 1954, we have continued to pioneer numerous patented technologies for industrial and commercial product applications. Crane Composites fiber-reinforced panels (FRP) can be found in virtually every type of vertical market, from highly industrialized environments to stylish retail and hospitality settings.

No matter what the application, our products and team reflect our mission statement: We are a performance driven organization committed to global leadership and products of high-quality composite materials.

Customers benefit not only from the outstanding performance characteristics of our products, but also from our extensive support programs. Our expert product teams are focused on the needs of customers to provide unparalleled service and expertise.

THE SUPERIOR OPTION.



cranecomposites.com | 1.800.435.0080 | 1.815.467.8666 [fax] | salesbp@cranecomposites.com

The following are trademarks of Crane Composites, Inc. or a related company: Glasbord, Kemlite, Kemply, Surfaseal, Sanigrid, Silhouette Trims and Varietex

Form 7754 | Rev. 3 | 07.19 (8628)